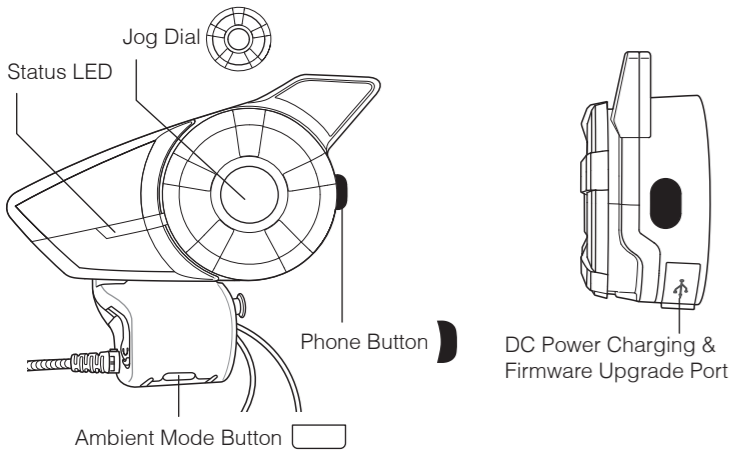
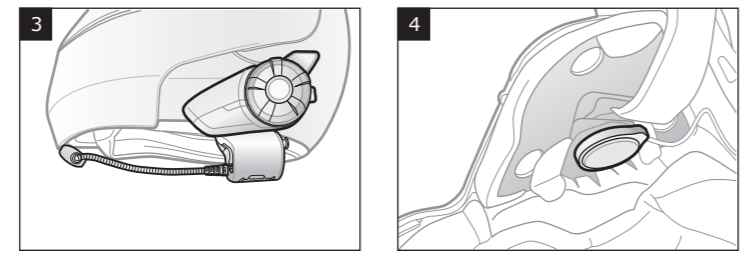
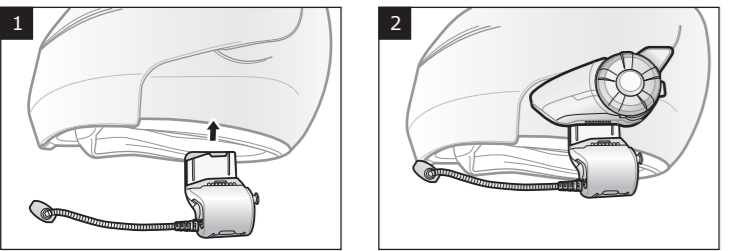


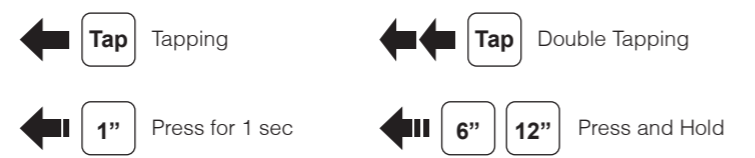
# 20S EVO Quick Start Guide



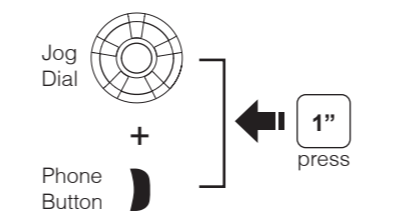
## Installation



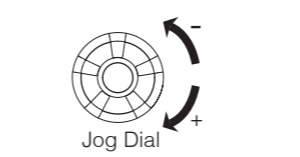
## Button Operation



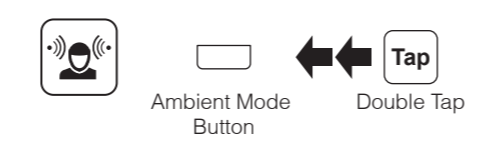
## Power On/Off



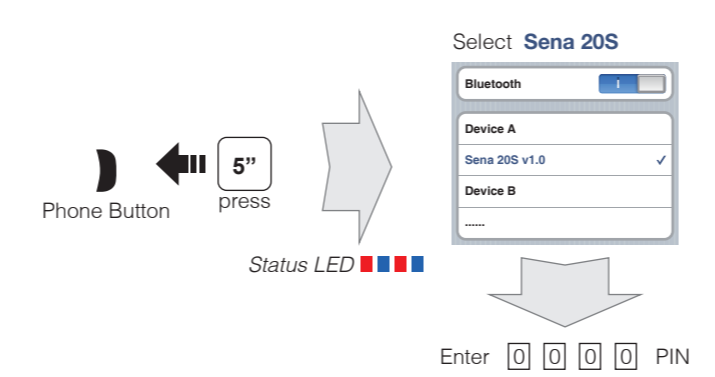
## Volume Adjustment



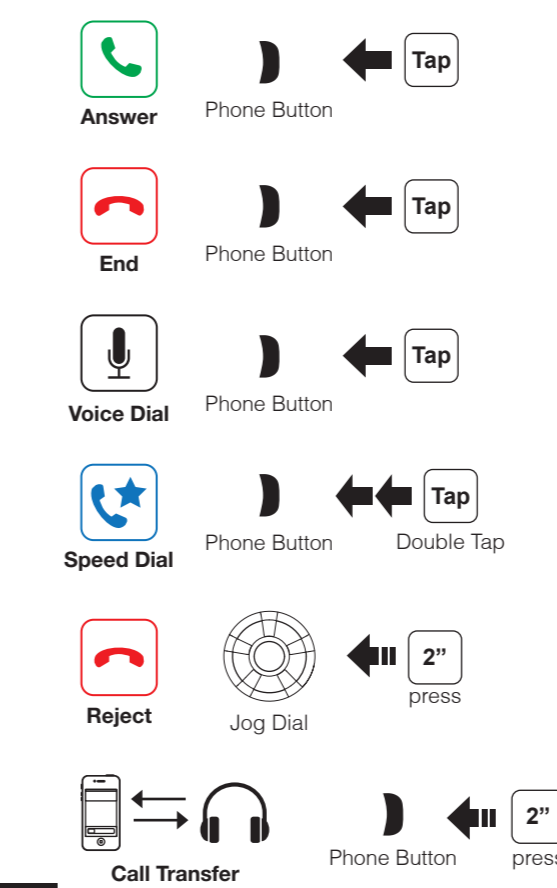
## Ambient Mode



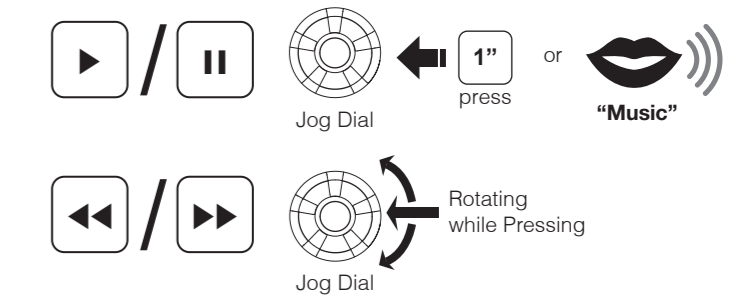
## Bluetooth Pairing Phone, MP3 and GPS



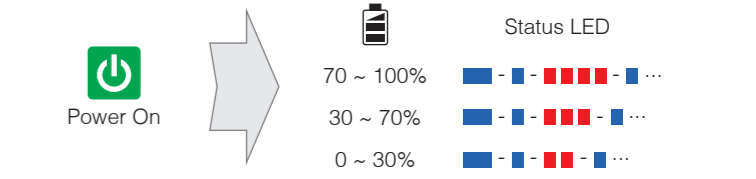
## Mobile Phone



## Music



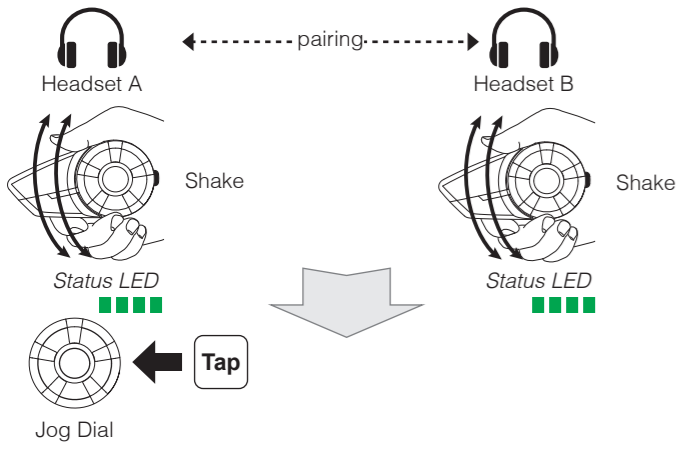
## Battery Check



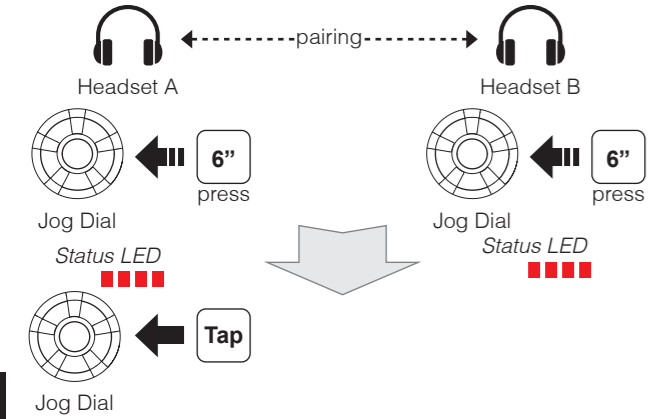
## Configuration Menu



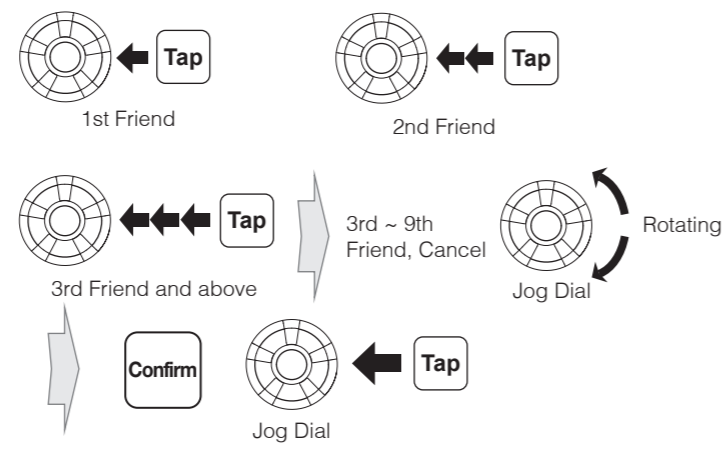
### Quick Pairing Intercom



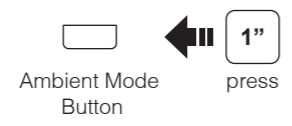
### Normal Pairing Intercom



### Start / End Intercom



### Start / End Group Intercom



### Radio On / Off



### Radio Seek Stations



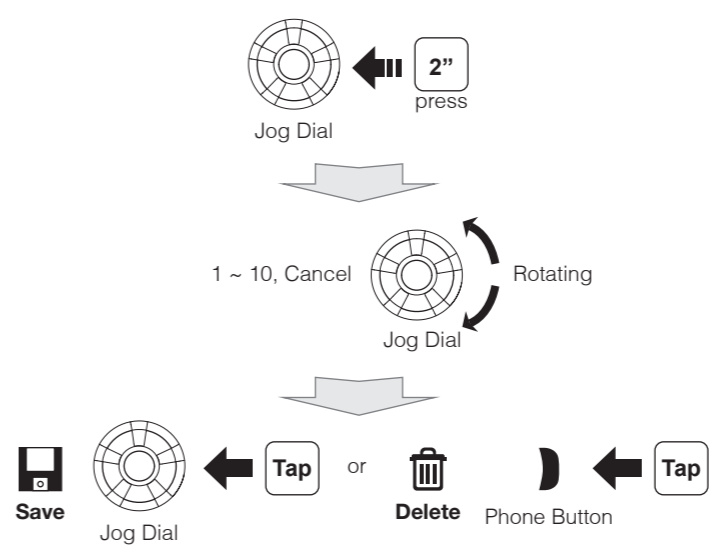
### Radio Scan Up FM Band



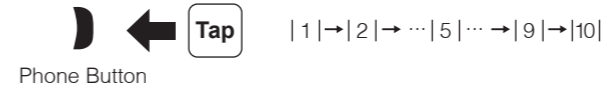
Save to preset while scanning



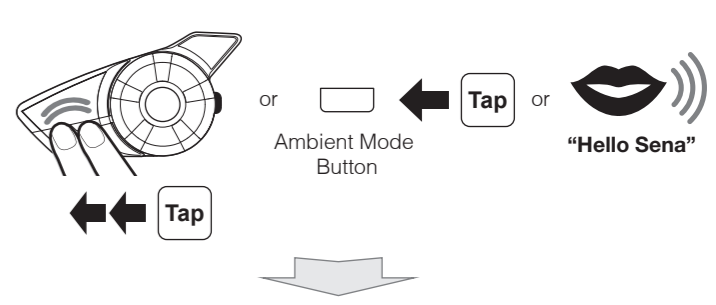
### Radio Save or Delete Preset



### Radio Move to Preset Station



### Voice Command



Voice Command	Function
"Music"	Music play/pause
"FM radio"	FM Radio on/off
"Intercom [one, two, ... , nine]"	Start/End each intercom
"Speed dial [one, two, three]"	Speed dialing

A full version of the manual is downloadable at [www.sena.com](http://www.sena.com).



**Sena Technologies, Inc.**  
[www.sena.com](http://www.sena.com)  
 Customer Support: [support.sena.com](mailto:support.sena.com)  
 E-mail: [support@sena.com](mailto:support@sena.com)