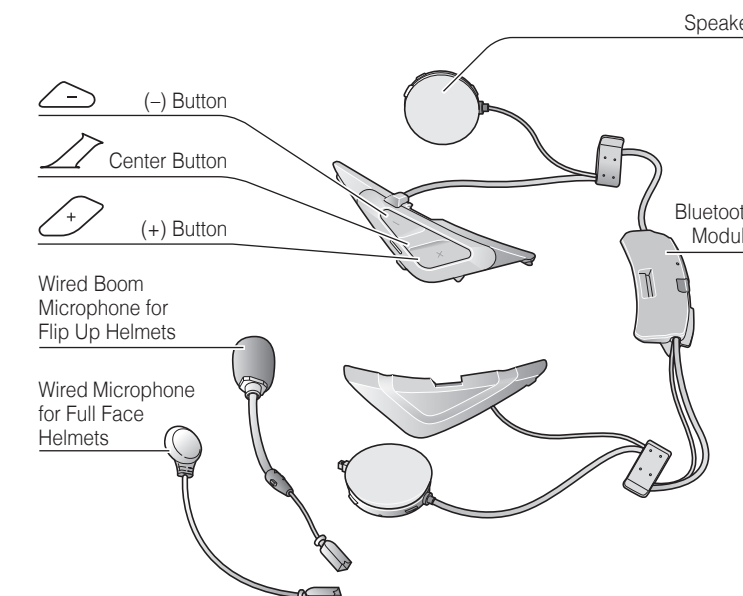


SRL2 for Shoei Helmets Quick Start Guide

ENGLISH



SRL2 compatible SHOEI helmets can be found by scanning the QR code of the product box.

Ride Connected

Blast your favorite tunes, talk over the intercom with your buddies, hear directions from your GPS and more, all through your headset. With built-in Bluetooth® capabilities, Audio Multitasking™, HD speakers and a microphone using Advanced Noise Control™, technology has never felt so minimal or freeing.

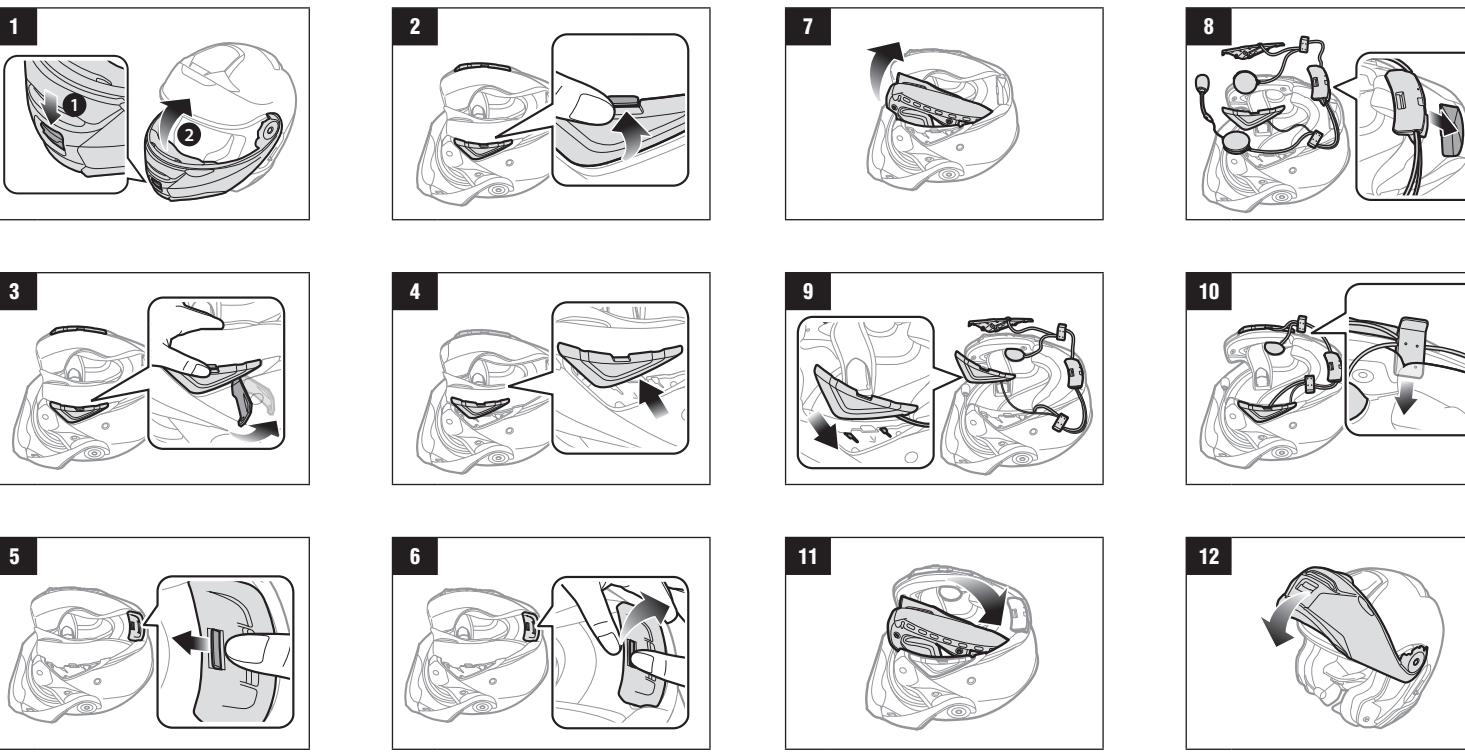
- BLUETOOTH 4.1**
- INTERCOM 1.6 KM**
- EIGHT-WAY INTERCOM**
- CUSTOM HELMET FIT**
- AUDIO MULTITASKING**
- ADVANCED NOISE CONTROL**
- VOICE COMMAND**
- MUSIC SHARING**

Getting Started

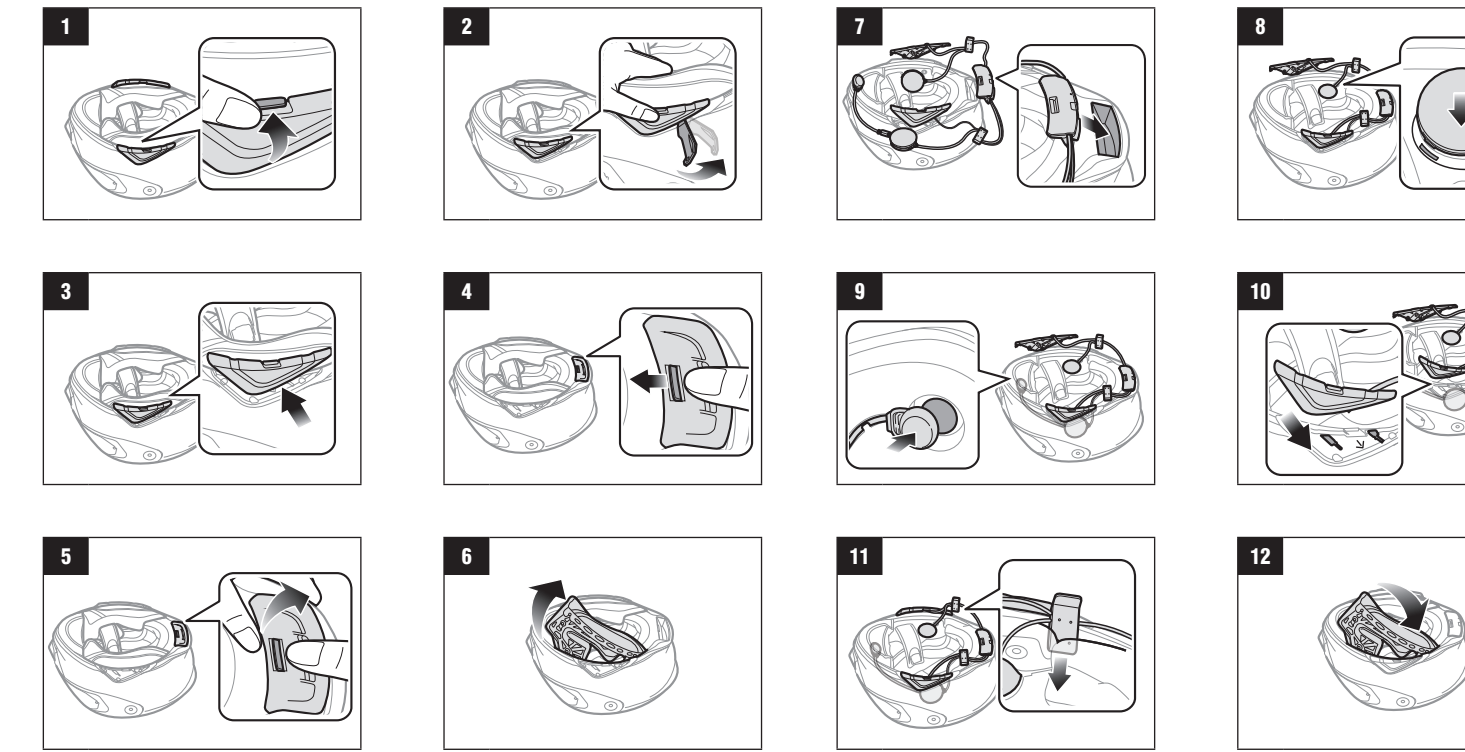
1. This product comes with a Quick Start Guide, which is a basic version of the User's Guide. **A FULL VERSION OF THE USER'S GUIDE CAN BE DOWNLOADED AT SENA.COM.**
2. Update this product for free with the latest firmware to fully enjoy the new advanced features built into this product. Visit SENA.COM to see how to update your product.
3. Users can follow Sena on Facebook, YouTube, Twitter and Instagram to receive the most up to date information on products, helpful tips and all other announcements regarding Sena products.

SENA Sena Technologies, Inc.
www.sena.com
Customer Support: support.sena.com

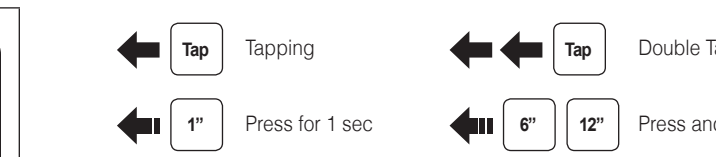
Flip Up Helmet Installation



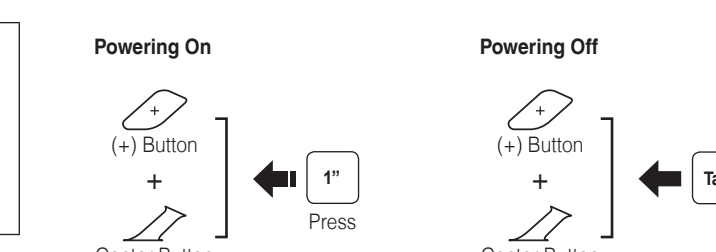
Full Face Helmet Installation



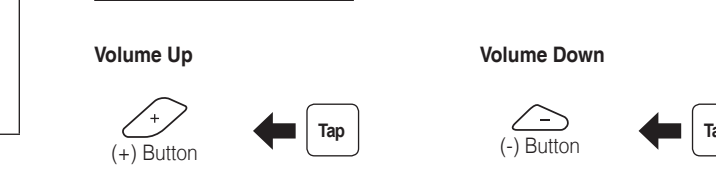
Button Operation



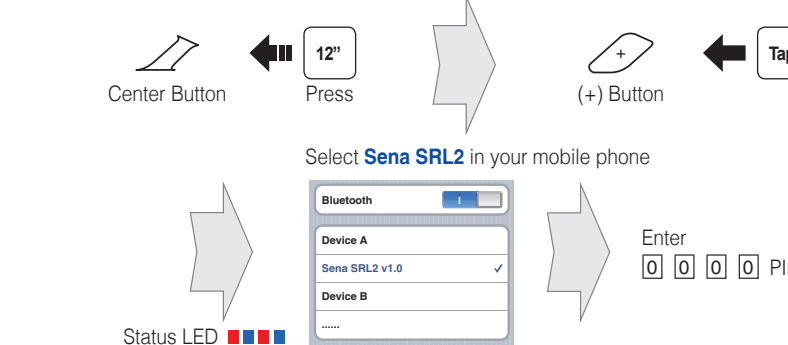
Power On/Off



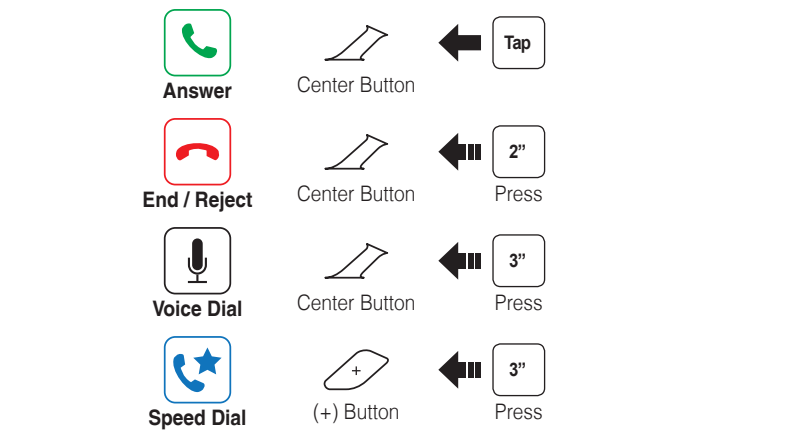
Volume Adjustment



Bluetooth Pairing Phone, MP3 and GPS



Mobile Phone



Music

Play / Pause music
Center Button ← 1" Press

Track forward
(+) Button ← 1" Press

Track backward
(-) Button ← 1" Press

Battery Check

Power On → Status LED

- 70 ~ 100%: [Full bar]
- 30 ~ 70%: [Medium bar]
- 0 ~ 30%: [Low bar]

Configuration Menu

Center Button ← 12" Press

Using the Sena Device Manager

You can upgrade the headset's firmware and configure its settings directly from your PC or Apple computer. Download the Sena Device Manager, please visit sena.com.

Using the Sena Smartphone App

You can configure its settings directly from your smartphone. Download the Sena Smartphone App for Android or Apple operating systems from sena.com.

Intercom Pairing

Headset A ← Pairing → Headset B

Center Button ← 8" Press → Status LED [Full]

Center Button ← Tap

Start / End Intercom

Center Button ← Tap → 1st Friend

Center Button ← Tap → 2nd Friend

Center Button ← Tap → 3rd Friend and above

Center Button ← Tap → 3rd ~ 9th Friend, Cancel

(+) Button or (-) Button ← Tap

Start / End Group Intercom

(+) Button or (-) Button ← Tap

Note: You can use Group Intercom after saving your own group in the Sena Smartphone App. Please refer to the SRL2 User's Guide in more details.

Radio On / Off

(-) Button ← 1" Press

Radio Seek Station

Seek Up (+) Button ← Tap

Seek Down (-) Button ← Tap

Radio Scan Up FM Band

Start or Stop (+) Button ← 1" Press

Save to preset while scanning: Center Button ← Tap

Radio Save and Delete Preset

Center Button ← 3" Press

1 ~ 10, Cancel: (+) Button or (-) Button ← Tap

Save: (+) Button ← 1" Press

Delete: (-) Button ← 1" Press

Radio Move to Preset Station

Preset [# + 1] Center Button ← 1" Press

Voice Command

"Hello Sena" or Center Button + (-) Button ← Tap

Voice Command	Function
"Music"	Play/Pause music
"FM radio"	FM Radio on/off
"Intercom [one, two, ... , nine]"	Start/End each intercom
"Speed dial [one, two, three]"	Speed dialing

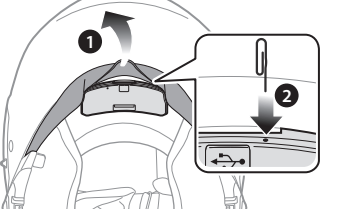
Troubleshooting

Factory Reset

If you want to restore the headset to factory default settings, use the Factory Reset in the configuration menu. The headset automatically restores the default settings and turns off.

Fault Reset

If the headset is not working properly for any reason, reset by gently pushing the pin-hole reset button located next to the DC Power Charging & Firmware Upgrade Port.



Quick Reference

Type	Operation	Button Command
Basic Operations	Power on	Press the (+) Button and the Center Button for 1 second
	Power off	Tap the (+) Button and the Center Button
	Volume adjustment	Tap the (+) Button or the (-) Button
Voice Command	Say "Hello, Sena"	Tap the Center Button and the (-) Button
	Tap the Center Button and the (-) Button	Tap the Center Button and the (-) Button
Mobile Phone	Answer phone call	Tap the Center Button
	End/Reject phone call	Press the Center Button for 2 seconds
	Voice dial	Press the Center Button for 3 seconds
	Speed dial	Press the (+) Button for 3 seconds
Music	Play/Pause music	Press the Center Button for 1 second
	Track forward	Press the (+) Button for 1 second
	Track backward	Press the (-) Button for 1 second

Quick Reference

Type	Operation	Button Command
FM Radio	FM radio on/off	Press the (-) Button for 1 second
	Seek forward	Double tap the (+) Button
	Seek backward	Double tap the (-) Button
Intercom	Intercom pairing	Press the Center Button for 8 seconds Tap the Center Button
	Start/End intercom	Tap the Center Button
	End all intercoms	Press the Center Button for 5 seconds
	Start group intercom	Tap the (+) Button and the (-) Button
	End group intercom	Tap the (+) Button and the (-) Button