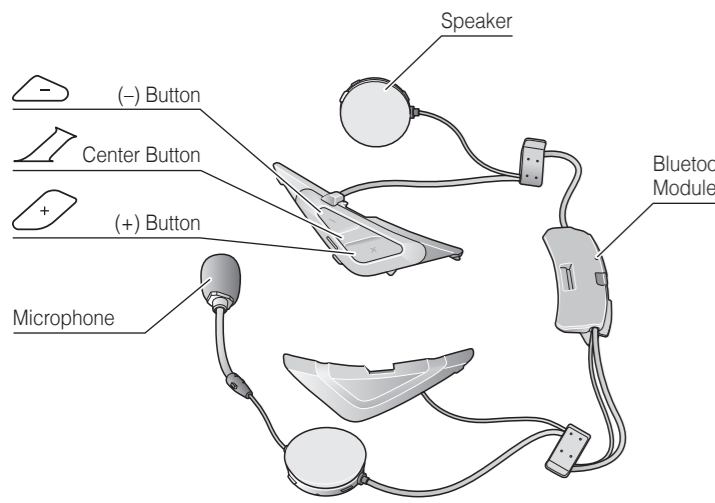


SRL for Shoei Neotec II Quick Start Guide

Product Details



Installation

-
-
-
-
-
-
-
-
-
-
-
-

Button Operation

- Tap Tapping
- Double Tapping
- 1" Press for 1 sec
- 6" 12" Press and Hold

Power On/Off

Powering On

- (+) Button + Center Button 1" Press

Powering Off

- (+) Button + Center Button Tap

Volume Adjustment

Volume Up

- (+) Button Tap

Volume Down

- (-) Button Tap

Bluetooth Pairing Phone, MP3 and GPS

Center Button 12" Press (+) Button Tap

Select **Sena SRL** in your mobile phone

Status LED Enter 0 0 0 0 PIN

Mobile Phone

- Answer Center Button Tap
- End / Reject Center Button 2" Press
- Voice Dial Center Button 3" Press
- Speed Dial (+) Button 3" Press

Music

- Play / Pause music Center Button 1" Press
- Track forward (+) Button 1" Press
- Track backward (-) Button 1" Press

Battery Check

Power On Status LED

- 70 ~ 100%
- 30 ~ 70%
- 0 ~ 30%

Configuration Menu

- Configuration Menu Center Button 12" Press

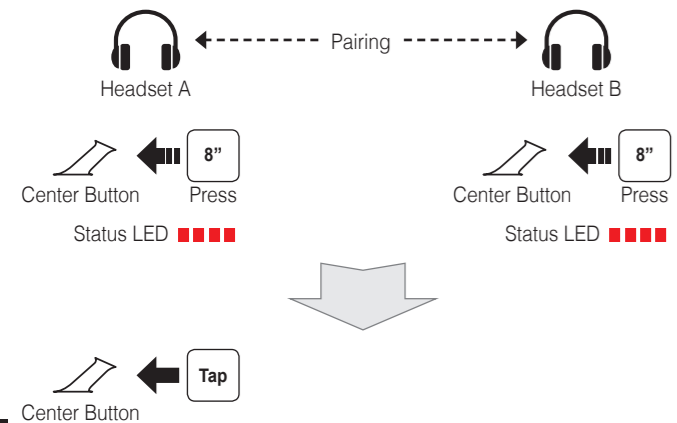
Using the Sena Device Manager

Connect the headset to your computer via a USB cable. Launch the Sena Device Manager and click **DEVICE SETTING** to configure the headset settings. For more information on downloading the Sena Device Manager, please visit [Sena.com](http://www.sena.com).

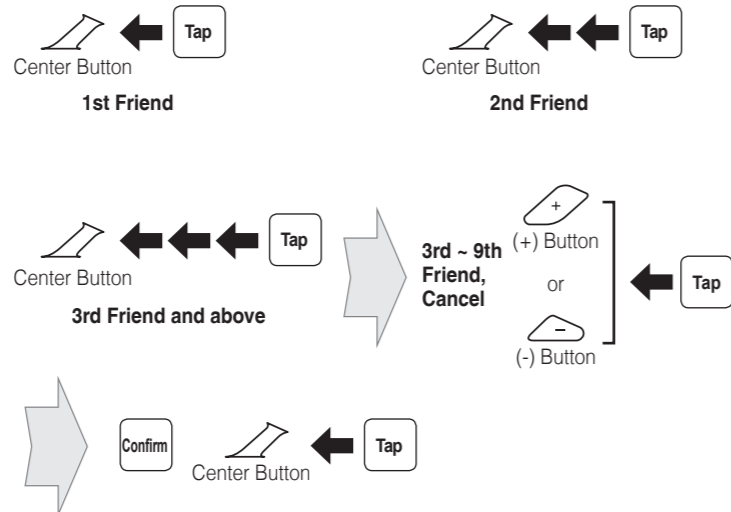
Using the Sena Smartphone App

1. On your smartphone, download the **Sena Smartphone App** for Android or iPhone from Google Play or App Store. Please refer to www.sena.com/headset-app/ for more details.
2. Pair your smartphone with the headset.
3. Run the **Sena Smartphone App**. Swipe the screen to the right and tap Setting to configure the headset settings.

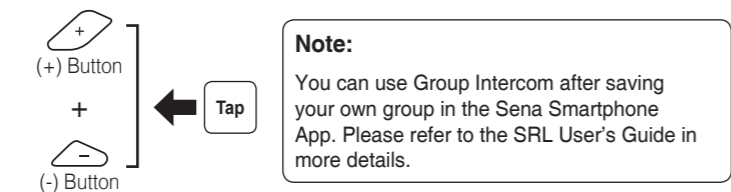
Intercom Pairing



Start / End Intercom



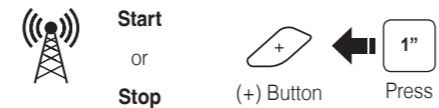
Start / End Group Intercom



Radio On / Off



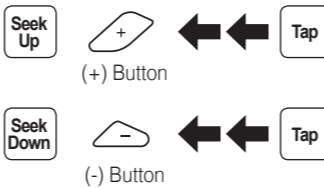
Radio Scan Up FM Band



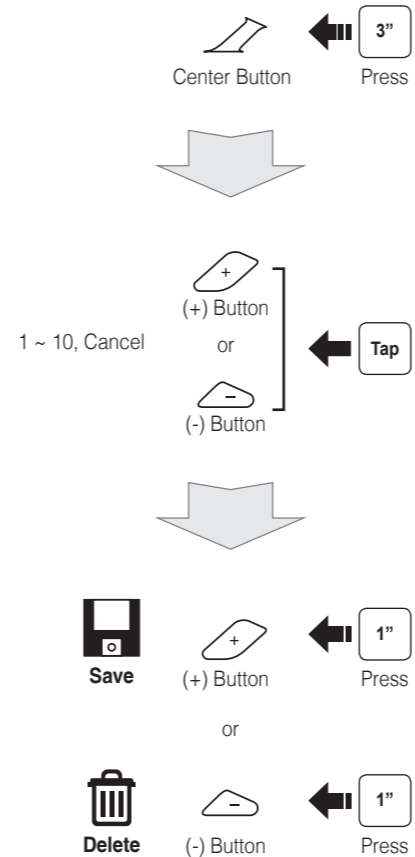
Save to preset while scanning



Radio Seek Station



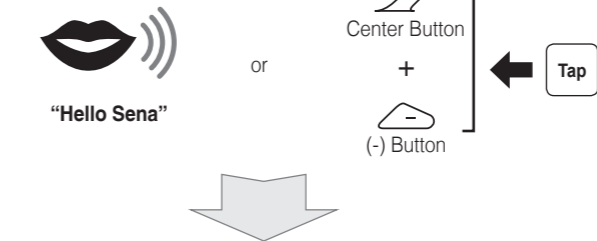
Radio Save and Delete Preset



Radio Move to Preset Station



Voice Command



Voice Command	Function
"Music"	Play/Pause music
"FM radio"	FM Radio on/off
"Intercom [one, two, ... , nine]"	Start/End each intercom
"Speed dial [one, two, three]"	Speed dialing

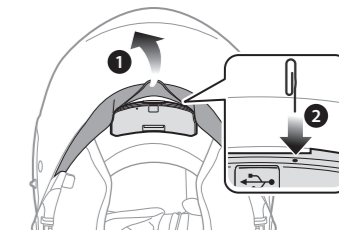
Troubleshooting

Factory Reset

If you want to restore the SRL to factory default settings, use the Factory Reset in the configuration menu. The headset automatically restores the default settings and turns off.

Fault Reset

If the SRL is not working properly for any reason, reset by gently pushing the pin-hole reset button located next to the DC Power Charging & Firmware Upgrade Port.



A full version of the manual is downloadable at www.sena.com.



Sena Technologies, Inc.
www.sena.com
Customer Support: support.sena.com
E-mail: support@sena.com