

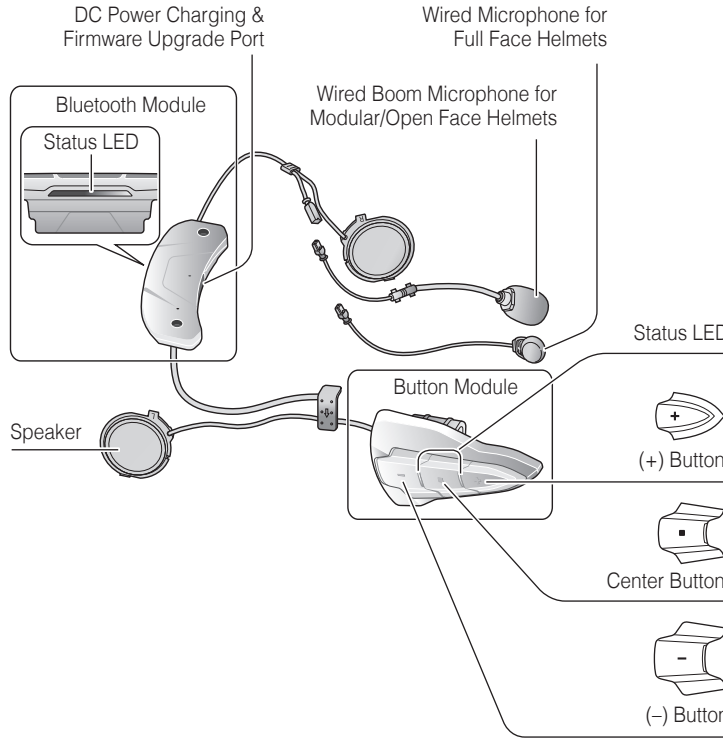
SMART HJC 10B Quick Start Guide
ENGLISH

Ride Connected







Getting Started

Modular/Open Face Helmet Installation

Full Face Helmet Installation



Blast your favorite tunes, call handsfree on your Bluetooth mobile phone, listen to voice instructions of GPS navigation by Bluetooth wirelessly, and talk over the intercom in full duplex with a passenger or other riders.

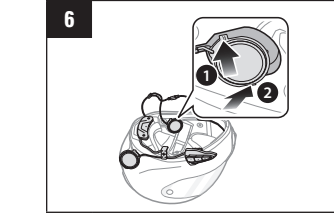
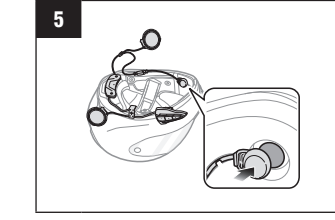
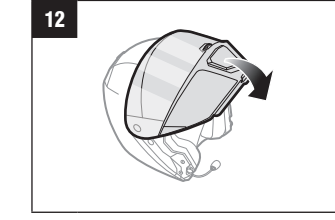
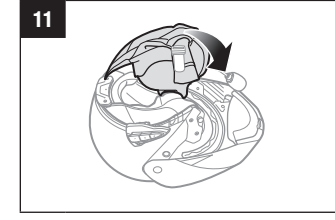
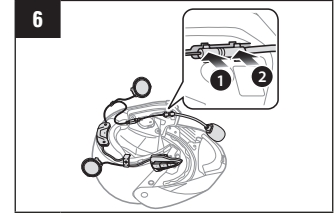
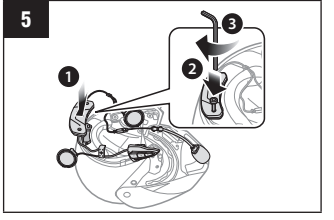
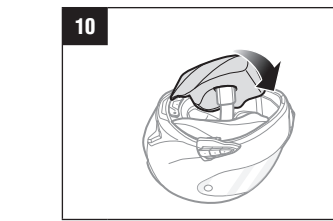
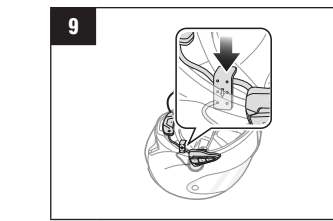
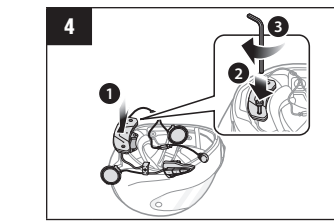
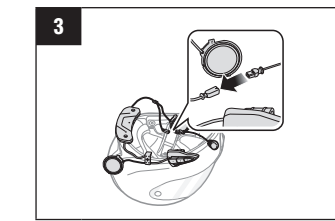
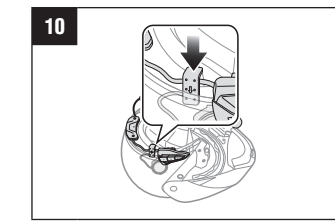
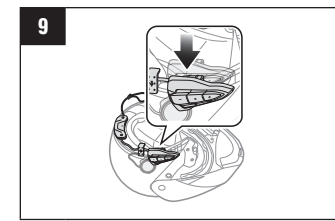
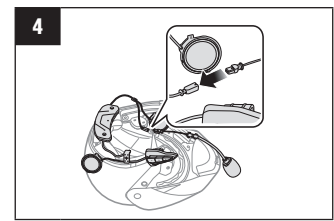
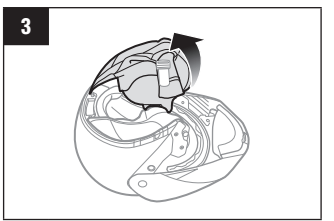
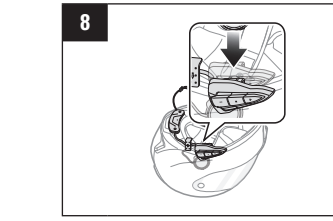
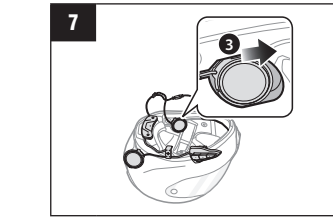
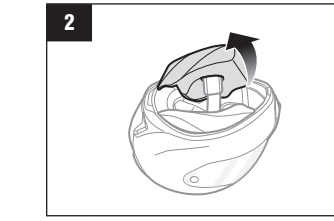
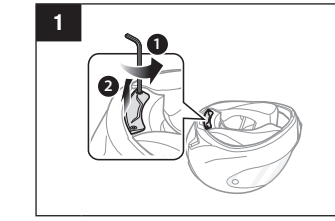
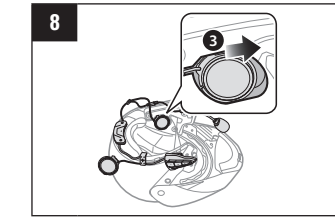
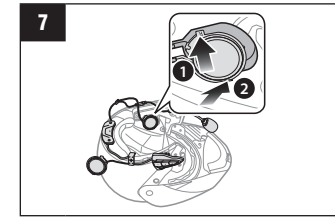
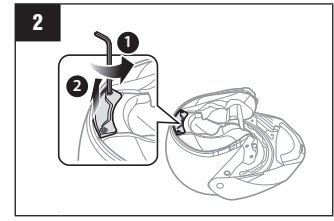
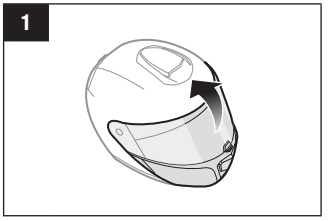
- 
BLUETOOTH 3.0
- 
**INTERCOM
400 M (0.25 MILES)***
- 
**TWO-WAY
INTERCOM**
- 
**CUSTOM
HELMET FIT**
- 
**ADVANCED NOISE
CONTROL**
- 
MUSIC SHARING

*: in open terrain

1. This product comes with a Quick Start Guide, which is a basic version of the User's Guide. **A FULL VERSION OF THE USER'S GUIDE CAN BE DOWNLOADED AT WWW.SMARTHJC.COM/BT.**
2. Update this product for free with the latest firmware to fully enjoy the new advanced features built into this product. Visit www.smarthjc.com/bt to see how to update your product.



HJC Corporation
hjchelmets.com
Customer Support: www.smarthjc.com/bt

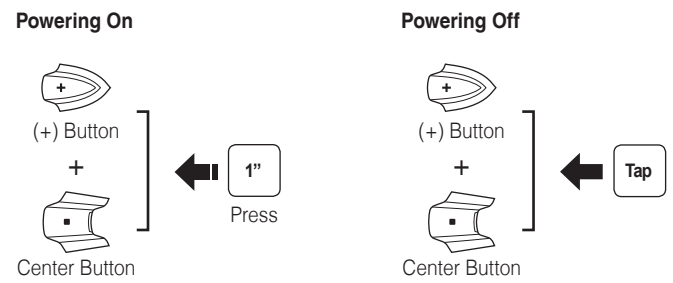


SMART HJC 10B compatible HJC helmets can be found by scanning the QR code of the product box.

Button Operation



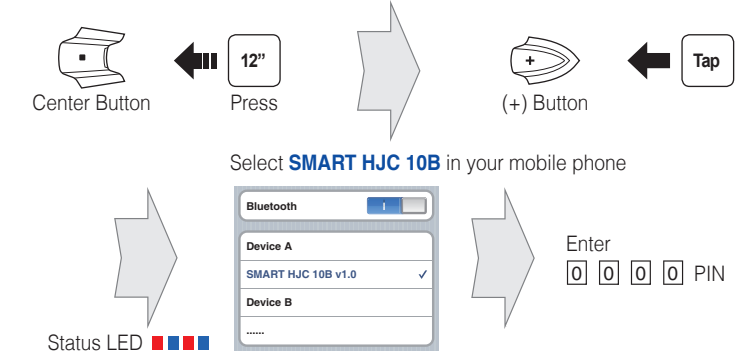
Power On/Off



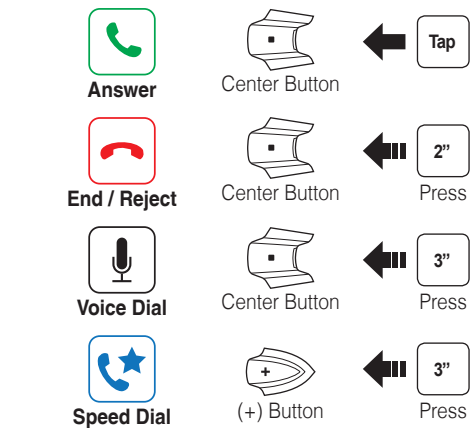
Volume Adjustment



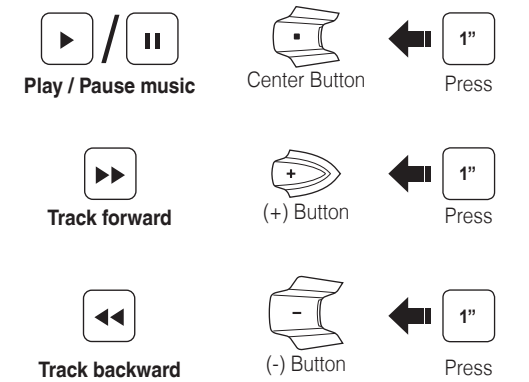
Bluetooth Pairing Phone, MP3 and GPS



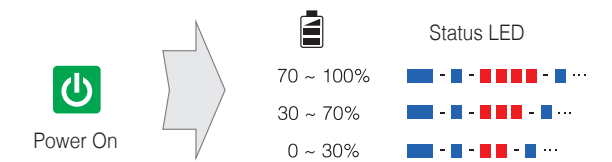
Mobile Phone



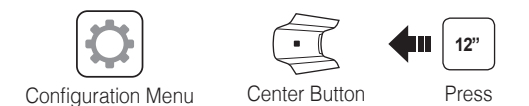
Music



Battery Check



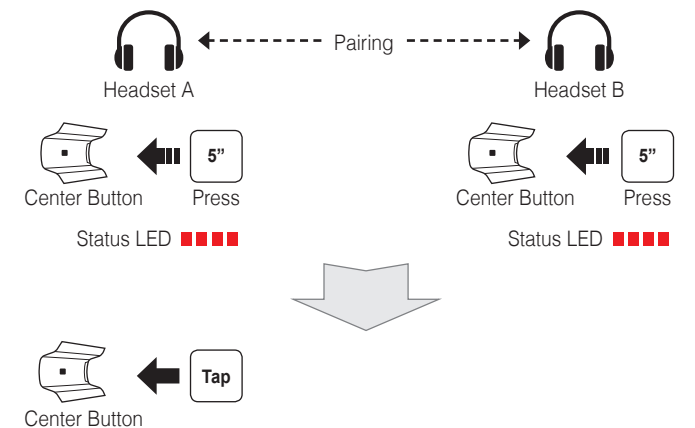
Configuration Menu



Using the SMART HJC Device Manager

You can upgrade the headset's firmware and configure its settings directly from your PC or Apple computer. Download the **SMART HJC Device Manager**, please visit www.smarthjc.com/bt.

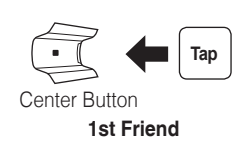
Intercom Pairing



Intercom Start



Intercom End



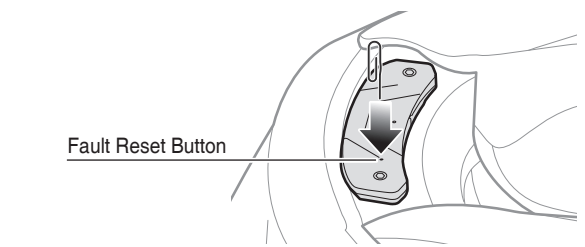
Troubleshooting

Factory Reset

If you want to restore the headset to factory default settings, use the Factory Reset in the configuration menu. The headset automatically restores the default settings and turns off.

Fault Reset

If the headset is not working properly for any reason, reset the headset by gently inserting a paperclip into the pinhole located next to the screw and lightly pressing the Fault Reset Button.



Quick Reference

| Type | Operation | Button Command |
|------------------|-----------------------|---|
| Basic Operations | Power on | Press the (+) Button and the Center Button for 1 second |
| | Power off | Tap the (+) Button and the Center Button |
| | Volume adjustment | Tap the (+) Button or the (-) Button |
| Mobile Phone | Answer phone call | Tap the Center Button |
| | End/Reject phone call | Press the Center Button for 2 seconds |
| | Voice dial | Press the Center Button for 3 seconds |
| | Speed dial | Press the (+) Button for 3 seconds |
| Music | Play/Pause music | Press the Center Button for 1 second |
| | Track forward | Press the (+) Button for 1 second |
| | Track backward | Press the (-) Button for 1 second |
| Intercom | Intercom pairing | Press the Center Button for 5 seconds |
| | | Tap the Center Button |
| | Start/End intercom | Tap the Center Button |